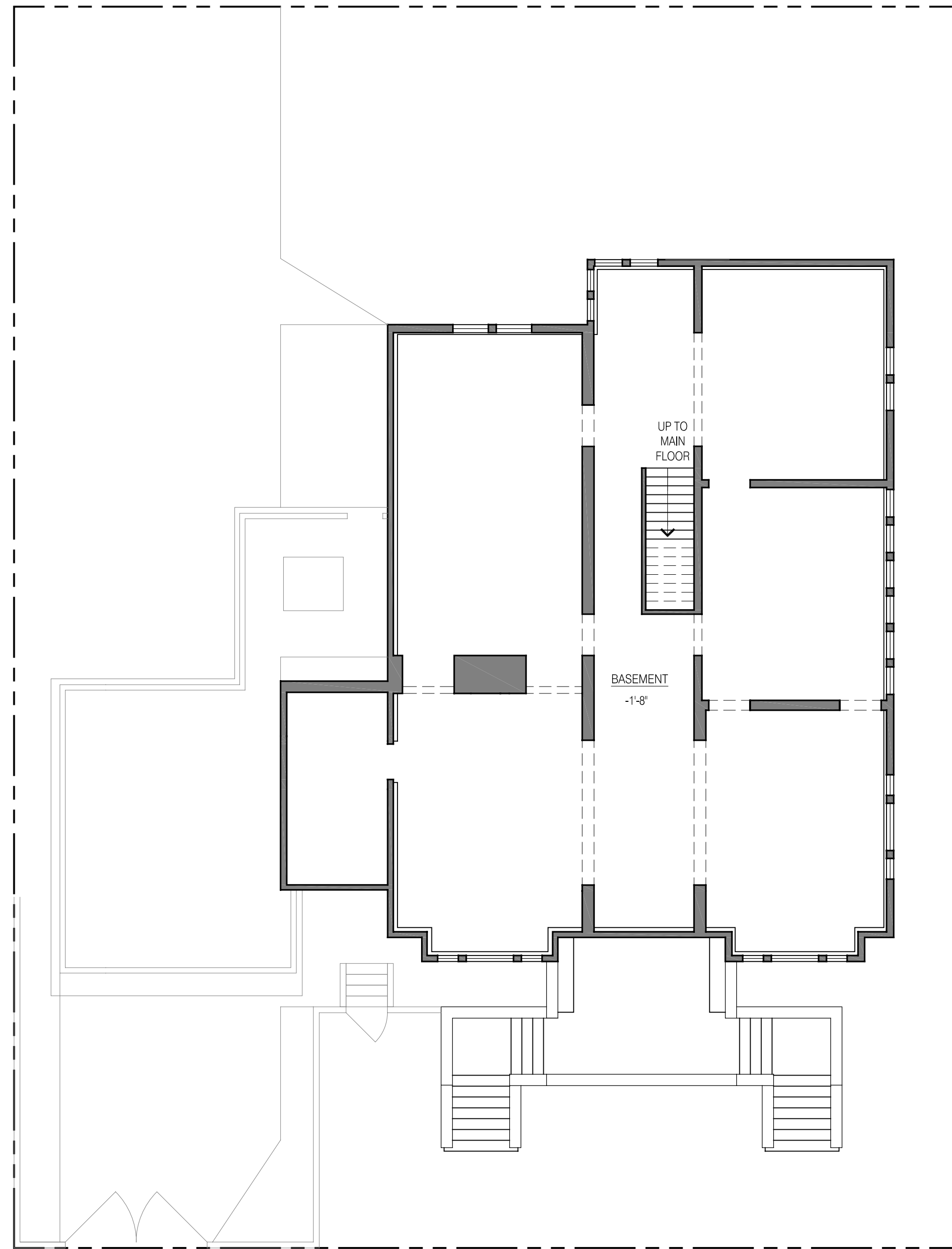
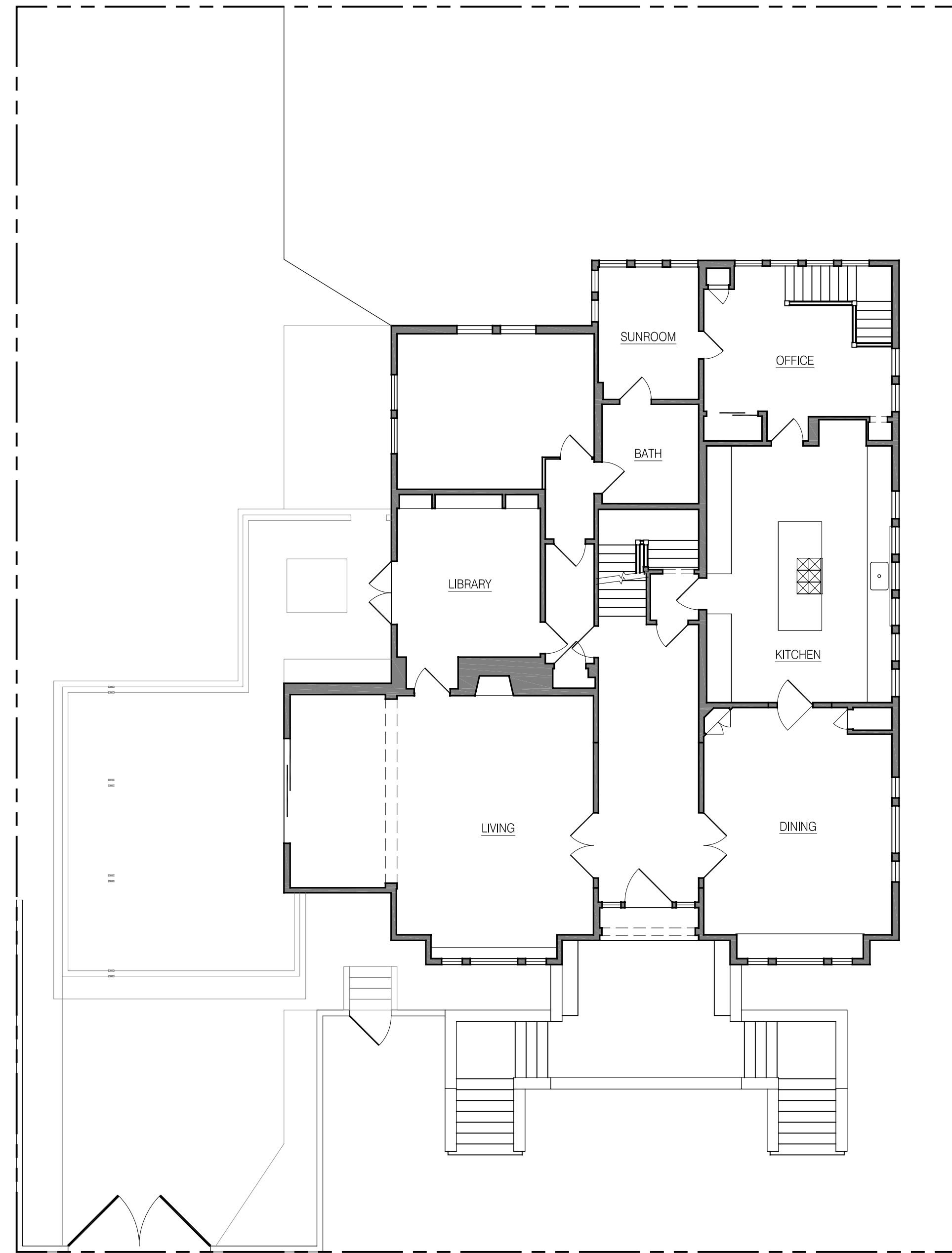


# Garber Street Residence - Existing Plans

2927 Garber Street - Berkeley, CA

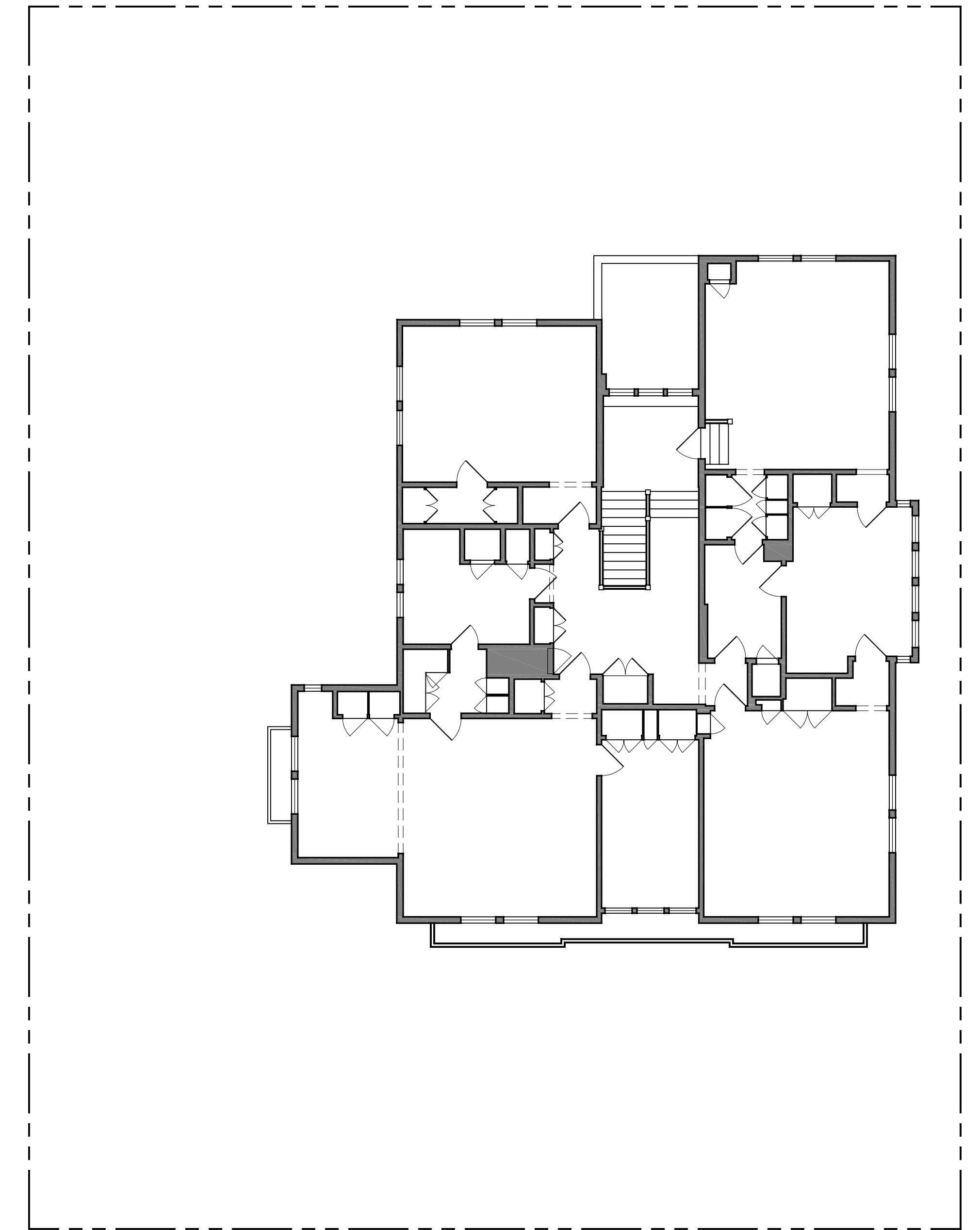


BASEMENT LEVEL

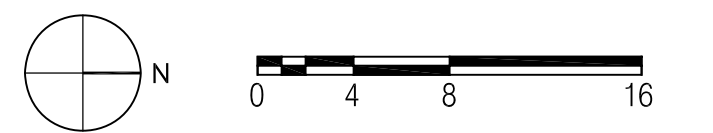


GROUND FLOOR

GARBER STREET



SECOND FLOOR



Presented by:

**The GRUBB Co.**  
REALTORS

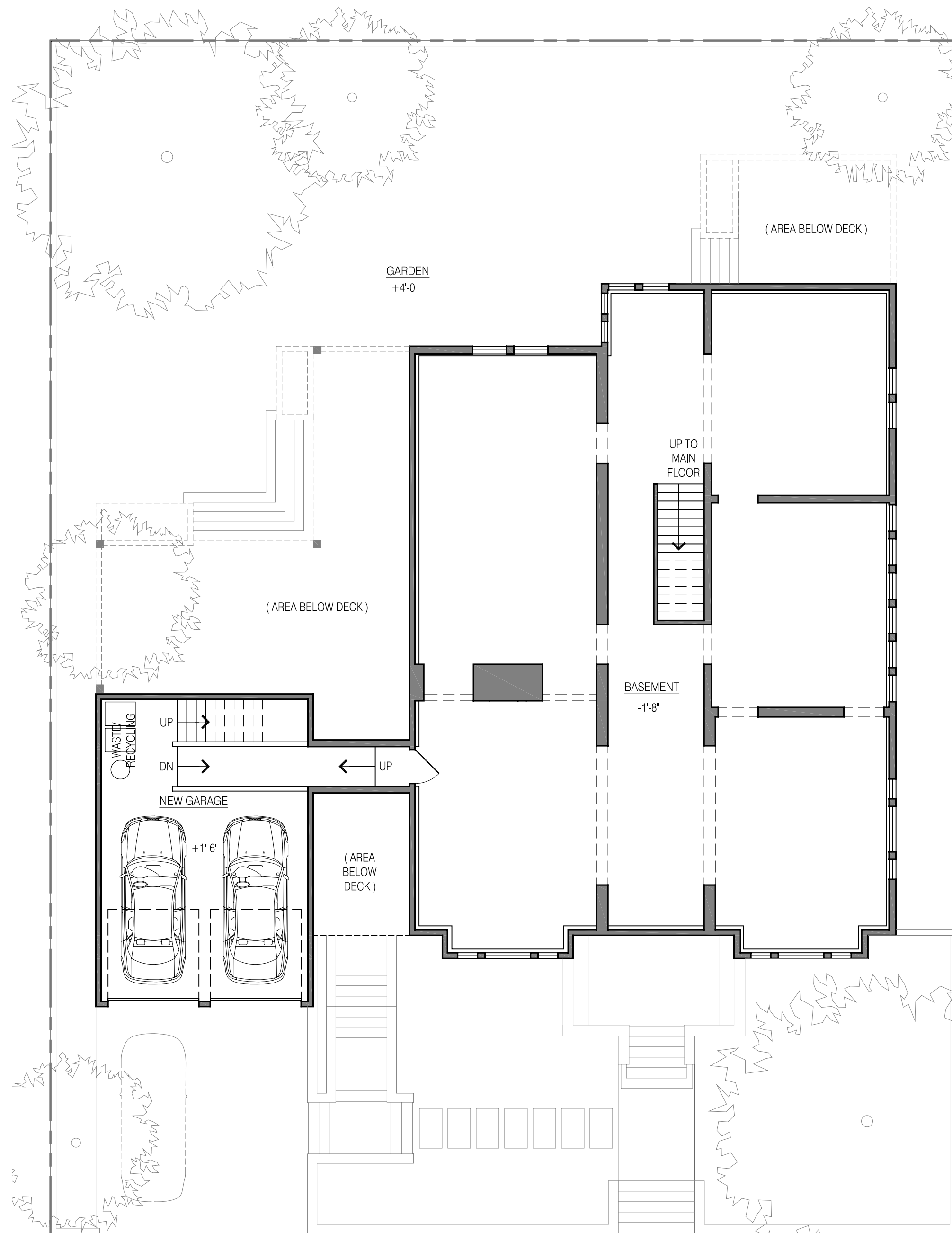
3070 Claremont Ave. Berkeley, CA 94705

**Faye Keogh**      **Candice Economides**  
Office: 510-652-2133 #426 & Office: 510-652-2133 #480  
DRE #: 00988354      DRE #: 01205869

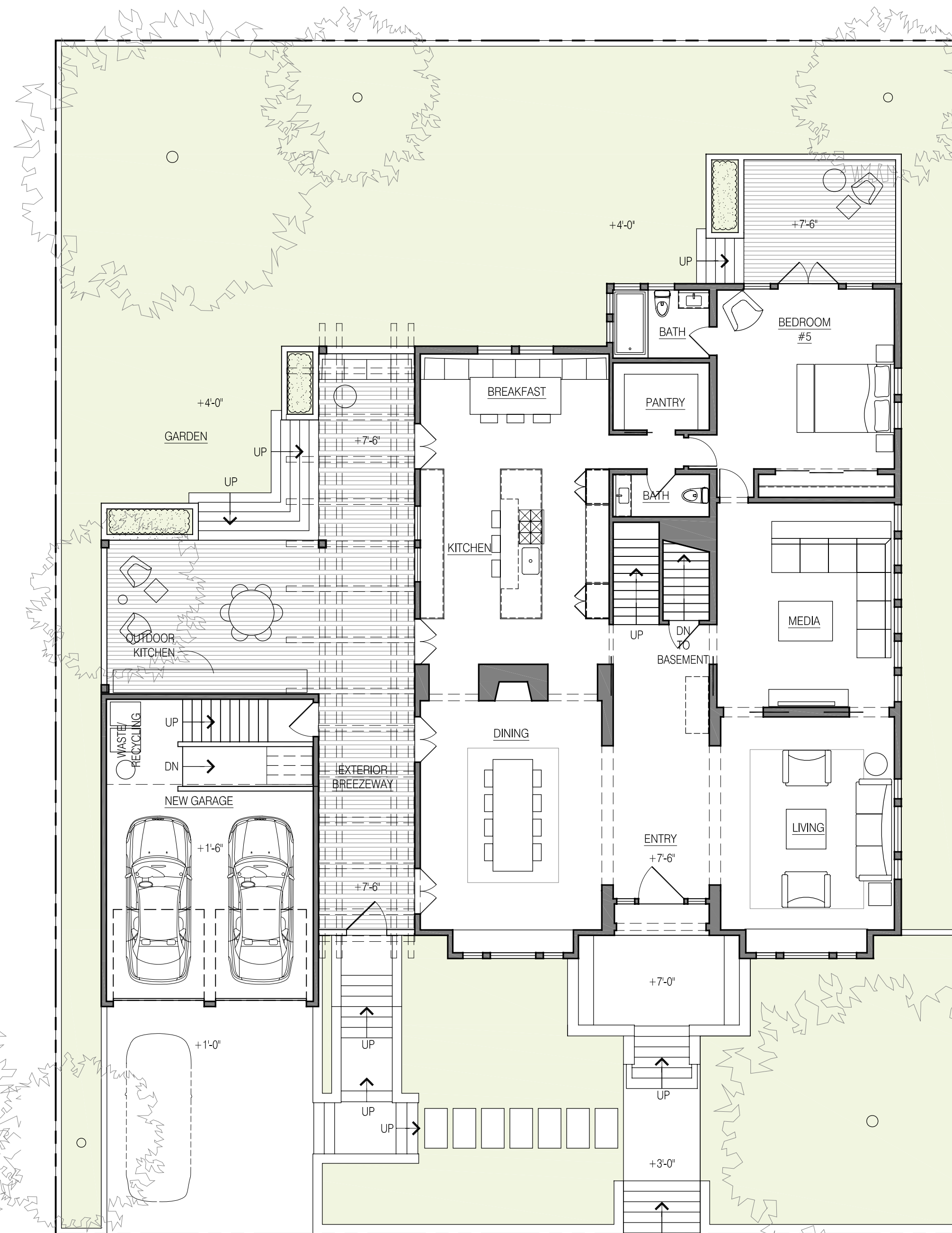
Drawings prepared by  
**TRACHTENBERG ARCHITECTS**  
2421 Fourth Street, Berkeley, CA 94710  
510-649-1414 Trachtenbergarch.com

# Garber Street Residence - Concept Plans

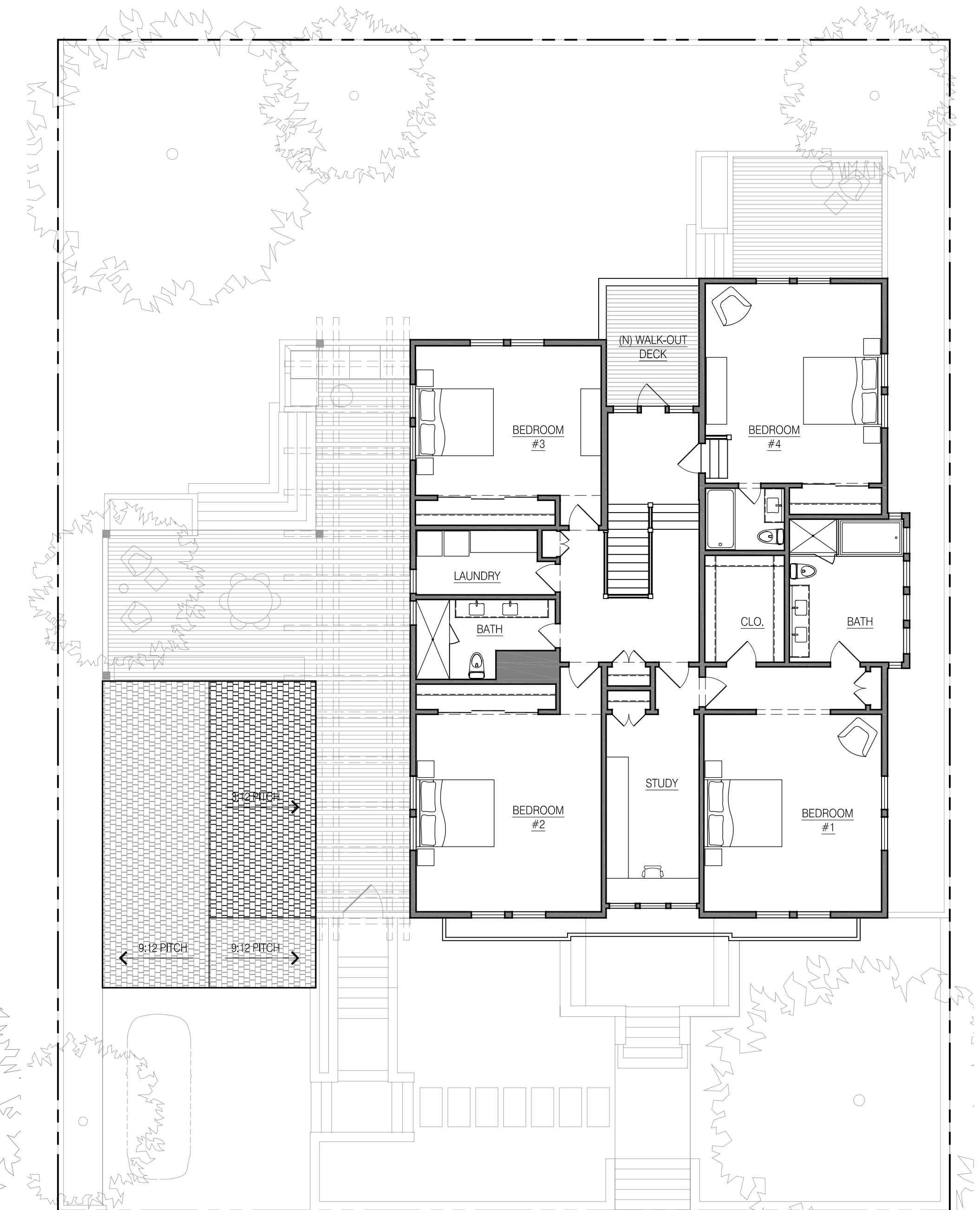
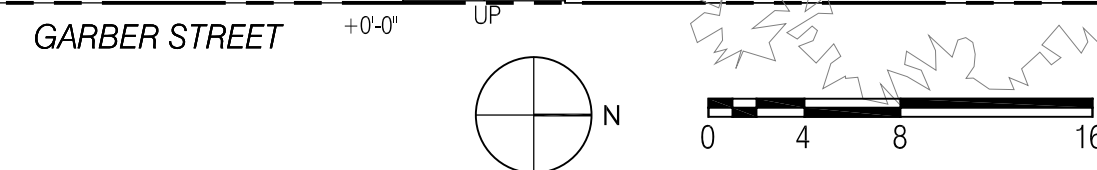
2927 Garber Street - Berkeley, CA



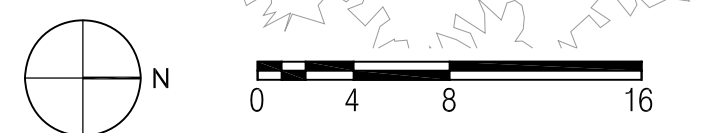
**BASEMENT LEVEL**



**GROUND FLOOR**



**SECOND FLOOR**



Presented by:

**The GRUBB Co.**  
REALTORS

3070 Claremont Ave. Berkeley, CA 94705

**Faye Keogh** Office: 510-652-2133 #426 & Office: 510-652-2133 #480  
DRE #: 00988354 & DRE #: 01205869

Drawings prepared by  
**TRACHTENBERG ARCHITECTS**  
2421 Fourth Street, Berkeley, CA 94710  
510-649-1414 Trachtenbergarch.com

# Garber Street Residence

2927 Garber Street - Berkeley, CA



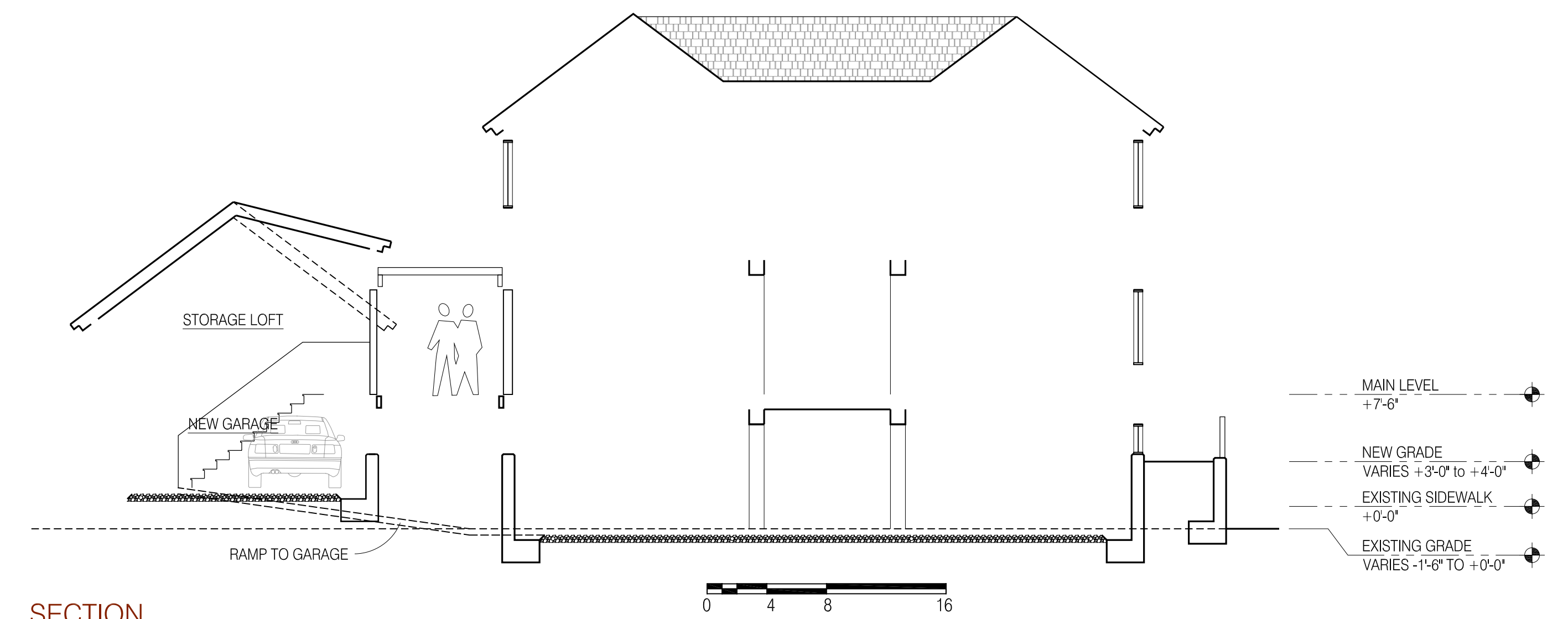
EXISTING



CONCEPTUAL PLAN

Drawings prepared by  
**TRACHTENBERG ARCHITECTS**  
2421 Fourth Street, Berkeley, CA 94710  
510-649-1414 Trachtenbergarch.com

REAR YARD AXONOMETRIC



SECTION

Presented by:

**The GRUBB Co.**  
REALTORS

3070 Claremont Ave. Berkeley, CA 94705

**Faye Keogh** & **Candice Economides**  
Office: 510-652-2133 #426 & Office: 510-652-2133 #480  
DRE #: 00988354 DRE #: 01205869